

Intro

Hi sometimes i find interesting links like this post. Posted here

<http://peileppe.deviantart.com/art/Gimp-lock-pixel-203701547>

Quote:

“This is happening again and again, and it's really frustrating - I'm currently running gimp 2.6.7 (or 2.6.11) and there's no way to lock a layer in order to prevent accidentally editing the wrong layer ... that's the reason I posted this "Gimp Rage comics" “

Thanks to [Peileppe](#) for his sense of humour. Well, i decided to find a solution, not a “real solution “ for now but a trick. Do you like tricks in Gimp? Then follow me!

Step 01

The first thing we need to do is just to add a mask to our sketch layer. So press Right Mouse button and select “Add Layer Mask...”(Figure. 1) Then the Right dialog appear. We select the option “Greyscale copy of layer. (Figure. 2)

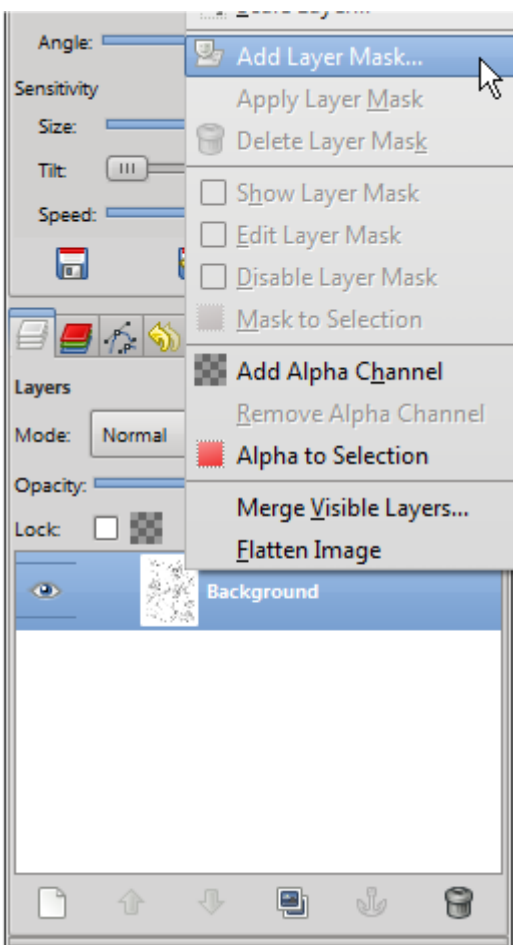


Figure. 1

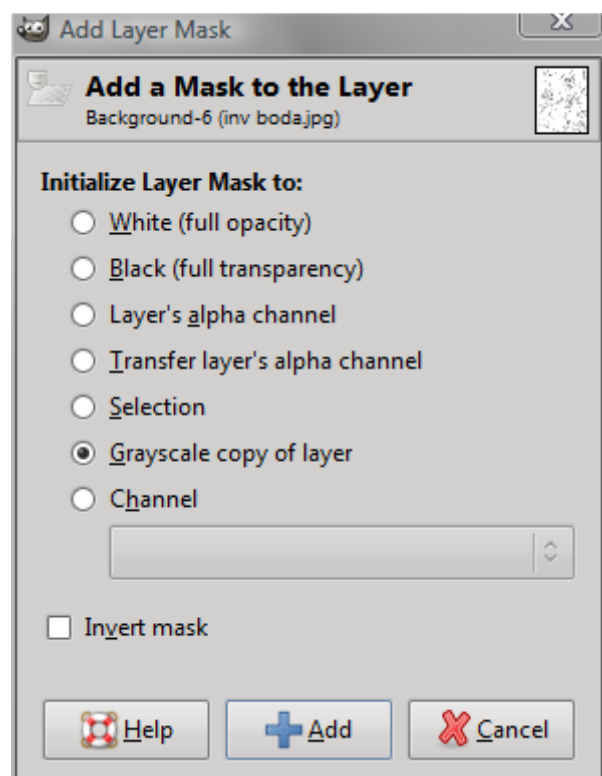


Figure. 2

Step 02

Once we have added the mask, we need to create a new layer over the “sketch layer “ with the mask. This layer will be the “ink layer” (Figure. 3). Go to the layer menu and create a new one filled with transparency.

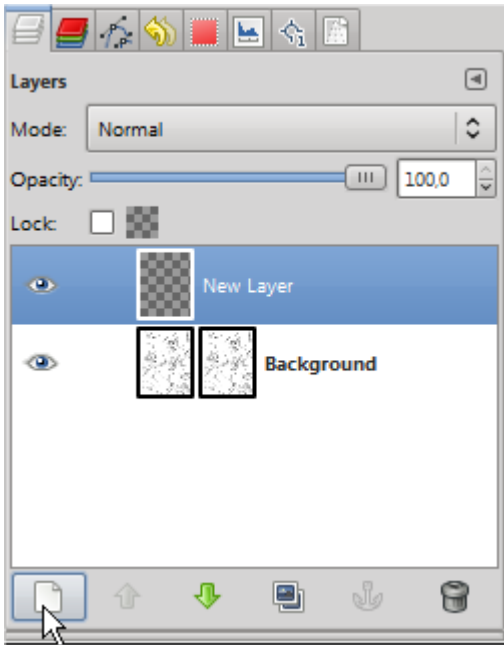


Figure. 3



Figure. 4

As you can see here, on the Figure. 4 we have the image but in the black parts we have the checker pattern, because now we have there transparency, right? We can see this on preferences. So go to `/edit/preferences`.

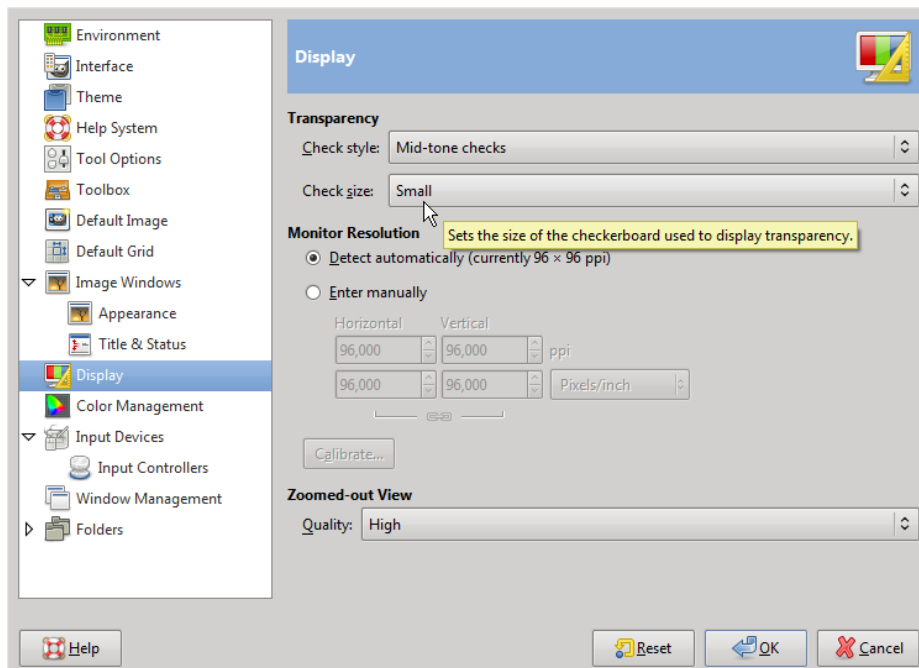


Figure. 5

Step 03

That produces the “magic” . If we paint on the transparent layer the ink works ok, but if we ink in the wrong layer (the sketch layer), then we automatically see a “masked” and “weird” result . Nice uh?



Figure. 6

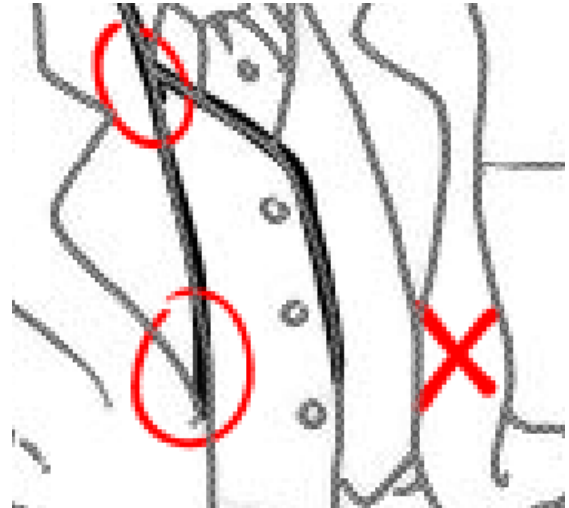


Figure. 7

Conclusion.

We can use this little trick in all type of sketches. If we use it with “pencil” sketches we can set the Checker display in “Gray only” and that is all.

This will make the transparent parts “gray” producing a better effect to the eye.

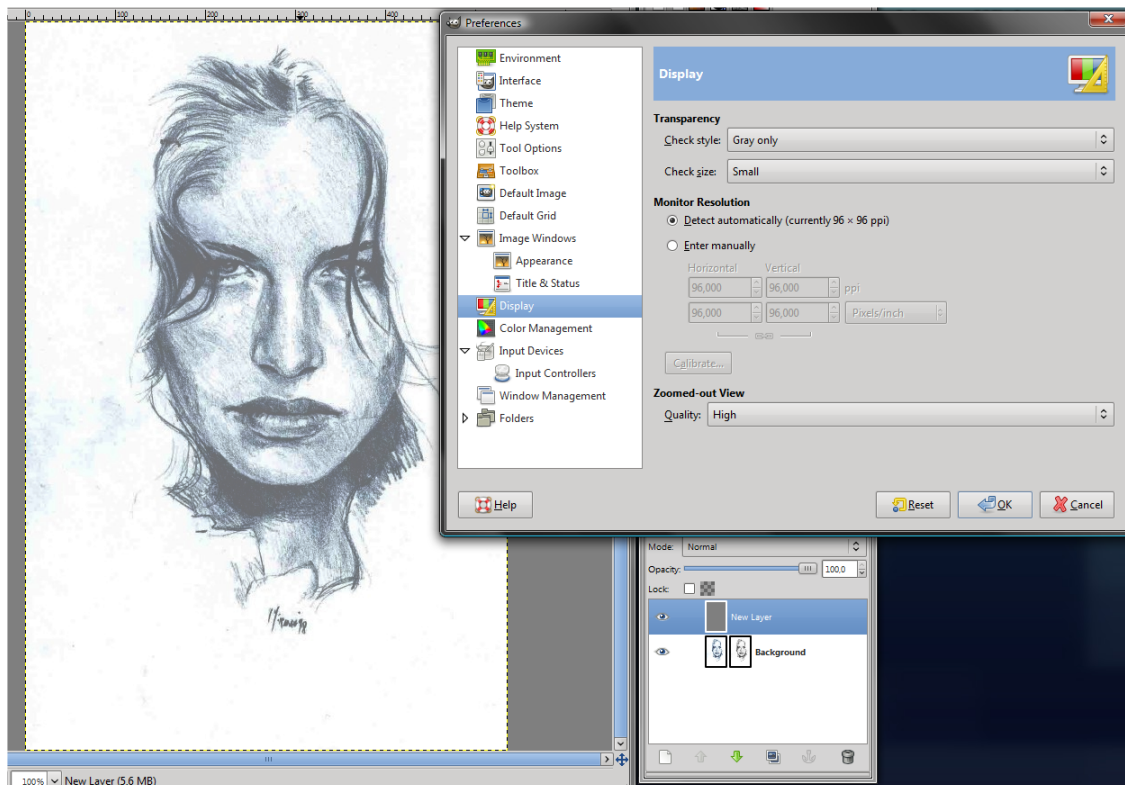


Figure. 8

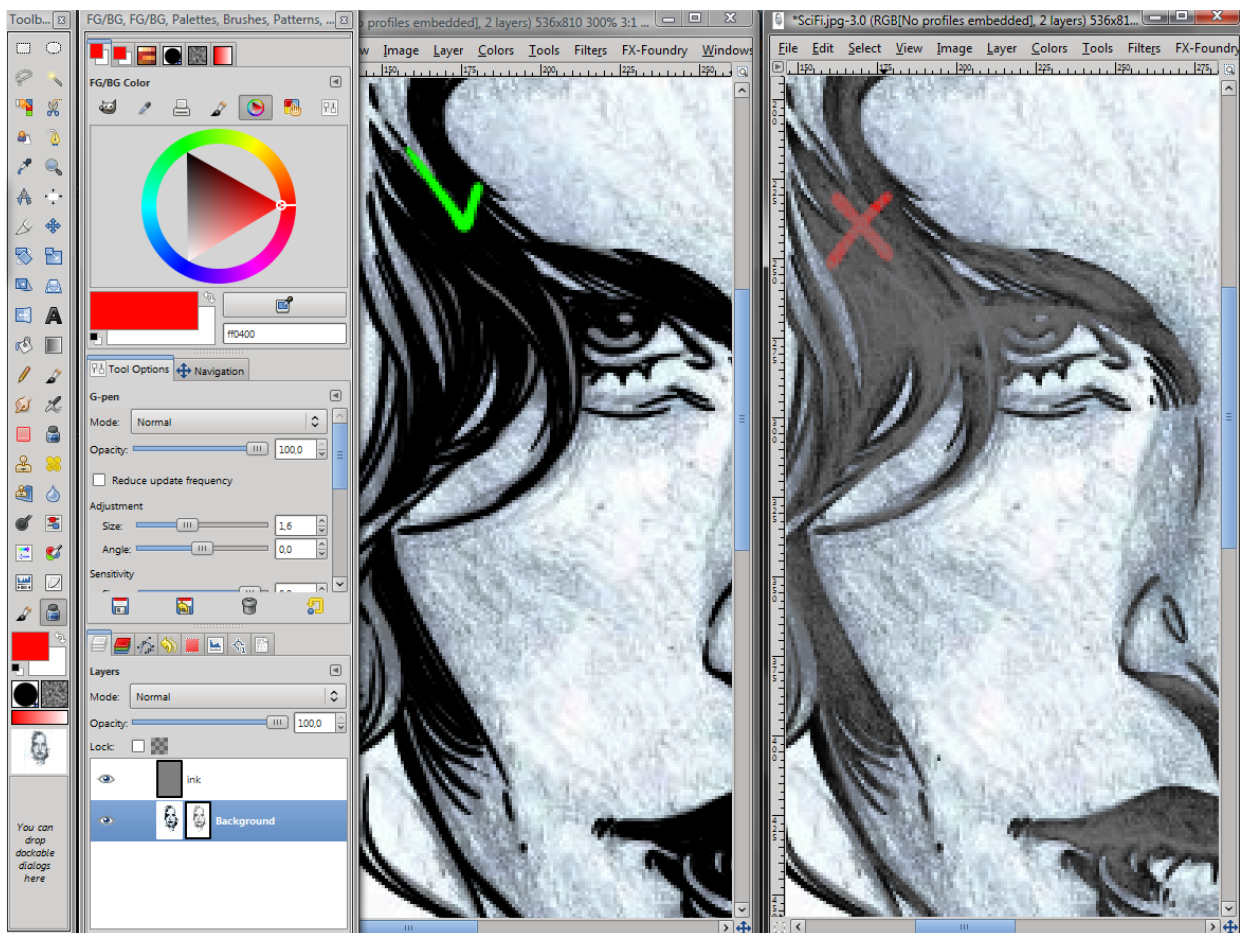


Figure. 9

That's all folks! If you like this trick , let me know it commenting on [deviantart](#) or sending me an [email](#) .And if you like my contents and want to see more , please subscribe to [my youtube channel](#) and make me a "watch " . that encourages me to make better contents!

Take care

[Ramón Miranda Blog](#)

GPS project Chairman